

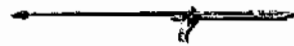
## Early Modern Human Culture

### Paleolithic Tool Traditions in Europe

	<u>Beginning (years ago)</u>	<u>Cultural Tradition</u>
Upper Paleolithic	17,000	Magdalenian
	21,000	Solutrean
	27,000	Gravettian
	33,000	Aurignacian/Chatelperronian
Middle Paleolithic	75,000	Mousterian
Lower Paleolithic	700,000+ ?	Acheulian

In northern hemisphere: cultural adaptations to temperate and sub-arctic conditions

Cro-Magnon  
spear thrower (atlatl) 17,000- 15,000  
harpoon  
bow and arrow 12,000 ya

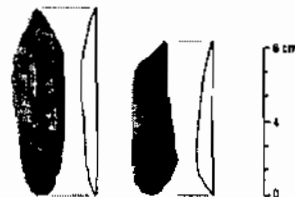
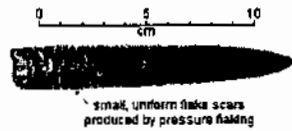


blade technique

percussion/pressure flaking

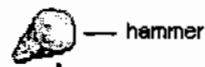
burins

compound tools

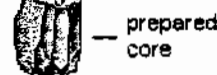
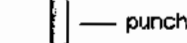


tailored clothing

23,000 ya



needles



Upper Paleolithic Art

decorated bone, antler, tusks  
necklaces, bracelets, pendants  
Venus figurines  
Cave paintings (sw France, Spain)



Lascaux Cave

Cro-Magnon Art

1. 35,000 - 25,000 (e.g., Grotte Chauvert)
2. 25,000 - 18,000 (S. France, n. Spain)
3. 18,000-15,000
4. 15,000 -11,000

